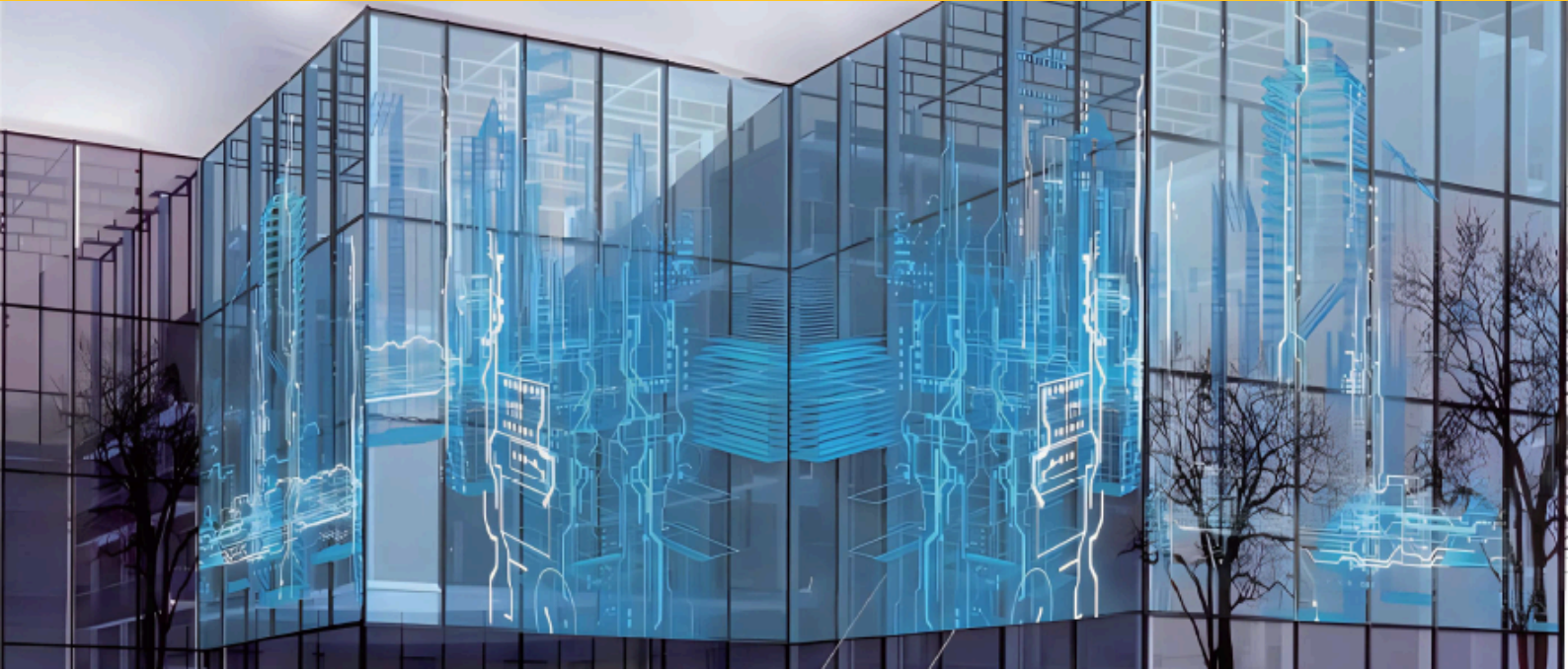




LDC

EQUIPMENT



PT Series

Types

PT-PH4-BOS

PT-PH6-TOS

PT-PH8-TOS

PT-PH10-TOS



High Transparency
High Reliability
Flexible

TRANSPARENT LED DISPLAY

sales@ldcequipment.com.au

(07) 5529 1188

ldcequipment.com.au



Pixel Pitch	4mmx8mm	6mmx6mm	8mmx8mm	10mmx10mm
Pixel	31250points/m2	27556points/m2	15625points/m2	10000points/m2
LED Specification	SMD2121 (Light drive integrated)			
Pixel Composition	1R1G1B			
Module Size	1000mm x 240mm			
Module Resolution	250 x 30	166 x 40	125 x 30	100 x 24
Pixel Density	250x125/m2	166x166/m2	125x125/m2	100x100/m2
Transparency Rate	≥85%			≥90%
LED Module Wiring Method	Inner line (clean back)			
Weight	≤7 Kg / m2			
White Balance Brightness	1000-1500cd/m2	1500-2000cd/m2		
Peak Power Consumption	800W/m2			
Average Power Consumption	About 260W/m2 (on video source)			
Refresh Rate	≥3840hz			
Grayscale Level	16Bit			
Brightness Control Level	0-255 degree			
Colour Temperature	3200K-8500K (Adjustable)			
Frame Rate	≥60hz			
Viewing Angle	H-H140° V-V140°			
Input Signal	DVI / VGA, composite video			
Screen Method Control	Synchronization box (computer control screen) or Asynchronization box (Wi-Fi connected to the mobile phone APP control screen, U disk control screen) Optional wide pressure			
Protection Level	Ip30			
Power Supply Requirements	AC 220+/-10%, 50-60hz (optional wide pressure 110V and 9-36V)			
Operating Temperature	-20-50°C			
Theoretical Service Life	100000 Hours			



sales@ldcequipment.com.au



(07) 5529 1188



ldcequipment.com.au





LDC

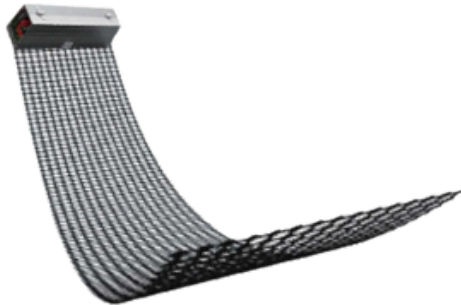
EQUIPMENT



PV Series

Type

PV-PH3.91-TOS
PV-PH3.91-BOS
PV-PH6.25-TOS



Lightweight
Customisability
Tailorable
Easy to Maintain
High Transparency

TRANSPARENT LED DISPLAY

sales@ldcequipment.com.au

(07) 5529 1188

ldcequipment.com.au



Pixel Pitch	3.91mmx3.91mm	3.91mmx7.82mm	6.25mmx6.25mm
Pixel Composition	SMD black lamp 1515 light drive integrated package		
Resolution	65536pixel/m2	32768pixel/m2	25600pixel/m2
Unit Module Size	1000mm x 250mm / 1500mm x 250mm		
Screen Brightness	3000cd/m2/1500cd/m2		
Unit Module Weight	1.5kg		
Module Weight	6kg/m2		
Module Thickness	65mm		
Transparency Rate	92%		
Max Power / Average Power	800w/m2/500w/m2		
Grayscale Level	16bit		
Contrast Ratio	9000:1		
Colour Temperature	6500k-9300k		
Brightness Adjustment	256 degree		
Horizontal / Vertical Viewing Angle	≥140° / ≥120°		
Optimal Viewing Distance	10m-3000m		
Refresh Rate	≥3840hz		
Control Method	Asynchronous control		
Control Distance	100m (network cable without relay) 500m (multi-mode fiber) 10km (single-mode fiber)		
Driving Method	Constant flow static		
Display Mode	1920 x 1080		
Designed Life	≥100000 Hours		
Heat Dissipation Method	Structure-reinforced natural convection (no air conditioning and fans)		
Operating/Storage Temperature	-20°C-+60°C / -55°C-+100°C		
Operating Humidity	10-90%		
Installation Form	Back mount or fixed installation		
Installation/Disassembly Speed	Rapid disassembly and assembly		
Maintenance Method	Front and rear installation and maintenance		



sales@ldcequipment.com.au



(07) 5529 1188



ldcequipment.com.au

